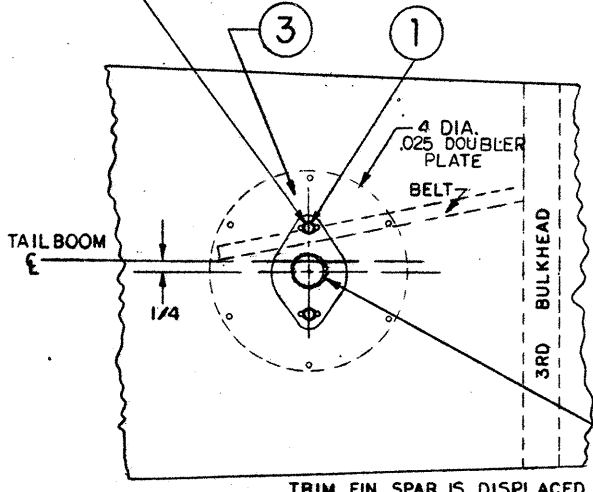


DON'T WELD ON BRACKET WHILE IT IS BOLTED TO SKIN OR YOU WILL MELT THE SKIN OR DESTROY THE HEAT TREAT.

FORM TO FIT SECURE WITH 8 WOOD SCREWS TYP.

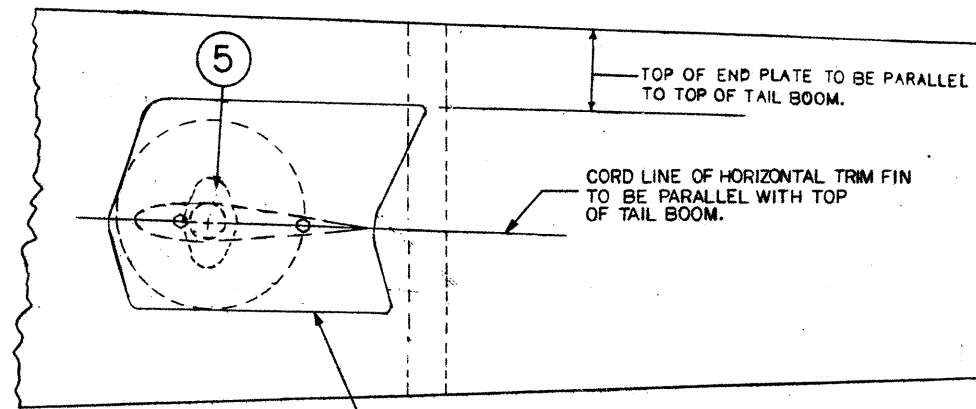
USE 5 POP RIVETS TOP AND BOTTOM SPACE 2 1/4 APART. INBOARD 2 RIVETS TO ALSO SECURE THE SPLICE TUBING.

3/16 NUT PLATES TO BE POP RIVETED ON INSIDE OF DOUBLER PLATE SECURING 3/16 BOLTS

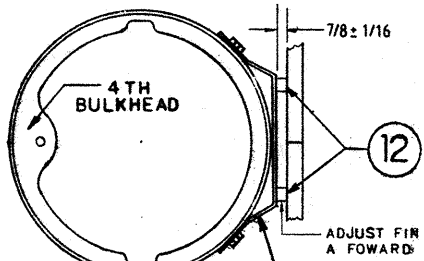


SECTION B-B Z-D7
TRIM FIN SPAR IS DISPLACED BELOW BOOM 1/4" SO THE TAIL ROTOR DRIVE BELT WILL NOT INTERFERE. MAINTAIN 1/4" BELT CLEARANCE MINIMUM

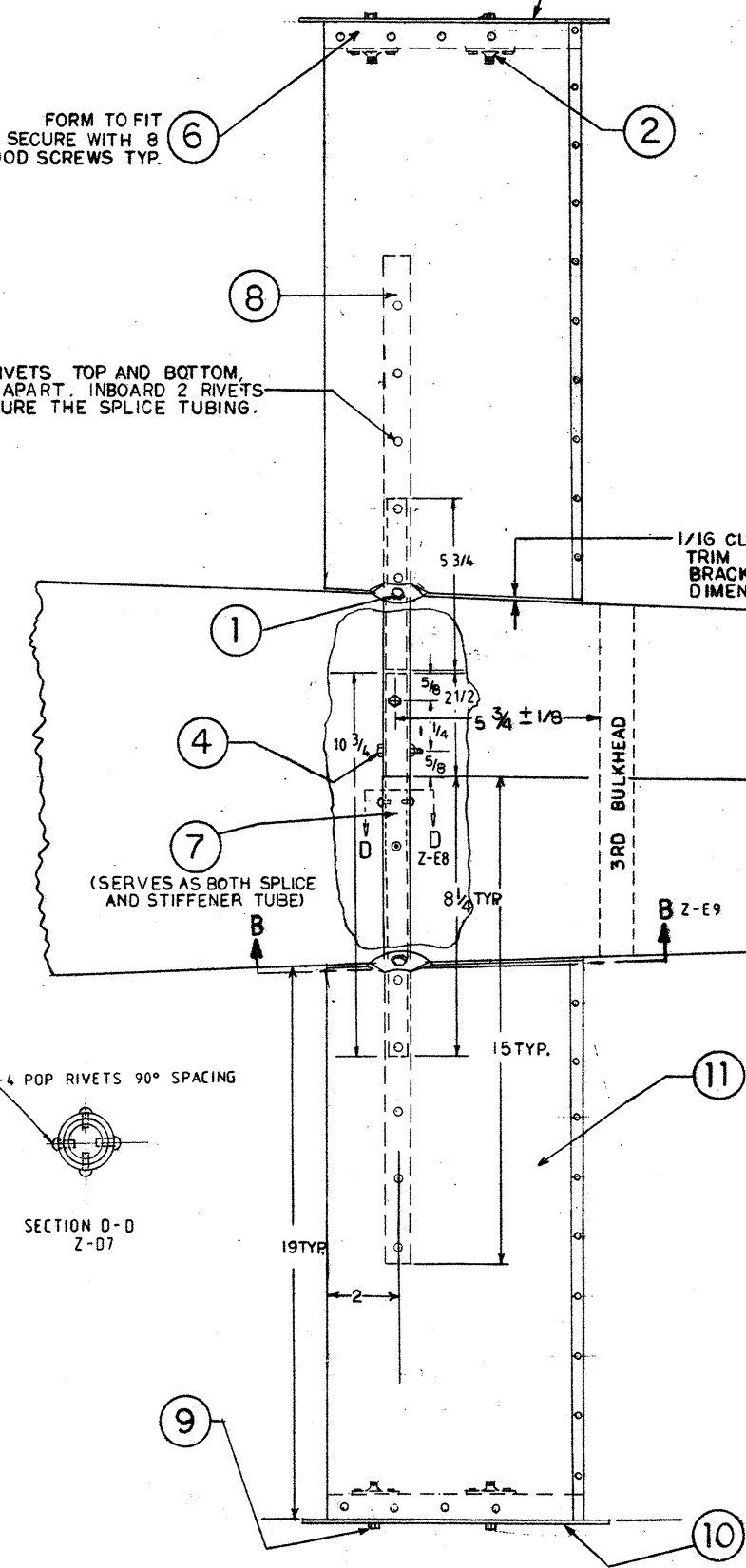
1.	E00-2301	BOLT 3/16 X 5/8	4
2.	E00-7100	10/32 NUT PLATES	10
3.	E09-3140	DOUBLER PLATE (FROM E24-9780)	2
4.	E00-2306	BOLT 3/16 X 1-1/4	2
5.	E09-3280	HORIZ. TRIM FIN BRACKET	2
6.	E09-3270	HORIZ. TRIM FIN WOOD PLUGS	2
7.	E09-3300	HORIZ. TRIM FIN SPLICE TUBE	1
8.	E09-3291	HORIZ. TRIM FIN SPAR	2
9.	E00-2305	BOLT 3/16 X 1-1/8	4
10.	E09-3330	HORIZ. TRIM FIN END PLATES	2
11.	E09-6131	HORIZ. TRIM FIN	2
12.	E09-3323	VERTICAL FIN SPACER, FRONT	2
13.	E09-3252	VERT. TRIM FIN ATTACHMENT BRKT.	1
14.	E00-2414	BOLT 1/4 X 2-3/8	2
15.	E00-2302	3/16 X 5/8 COUNTERSUNK SCREW	1
16.	E09-3321	VERT. FIN SPACER, REAR	1
17.	E09-7100	TAIL CONE COVER-FIBERGLASS	1
18.	E09-7110	SLIDER COVER-FIBERGLASS	1
19.	E09-3310	VERT. TRIM FIN DOUBLER (FROM E09-3330)	1
20.	E00-1200	8-32 X 7/16 PHILLIP HEAD SCREW	4
21.	E00-7000	8-32 NUT PLATES	4
22.	E00-2309	BOLT 3/16 X 1-7/8	1
23.	E09-3241	VERT. TRIM FIN SPAR	1
24.	E09-6120	VERT. TRIM FIN (LOWER)	1
25.	E09-7130	VERT. TRIM FIN STIFFNER (FROM E32-3110)	2
26.	E00-2303	BOLT 3/16 X 3/4	4
27.	E09-6110	VERT. TRIM FIN (UPPER)	1
28.	E09-3260	VERT. TRIM FIN WOOD PLUGS	2
29.	E09-7140	DOUBLER PLATE (FROM E24-9780)	6



VIEWED FROM FRONT TO REAR OF SHIP



BEND THIS BRACKET TO FIT TAIL BOOM & MATCH DRILL 3/16 HOLES THRU 4TH BULKHEAD & BOLT BRACKET ON BOOM, & ONE AT A TIME DRILL TRIM FIN MOUNTING HOLES. DRILL THROUGH THE PRE-DRILLED TRIM FIN ASSY. FOR HOLE LOCATION WHILE MAINTAINING PROPER FIN ALIGNMENT.



SECTION D-D Z-D7

NOTE THIS ANGLE IS IN RELATION TO THE TOP OF THE TAIL BOOM NOT THE GROUND

126° TO 128°

55° TO 56°

69° TO 70°

.025 DOUBLER PLATES POP RIVETED TO INSIDE OF TRIM FIN SKIN (ON BOTH INSIDE SURFACE OF FIN) HELPS MAKE A FLUSH, SMOOTH JOINT

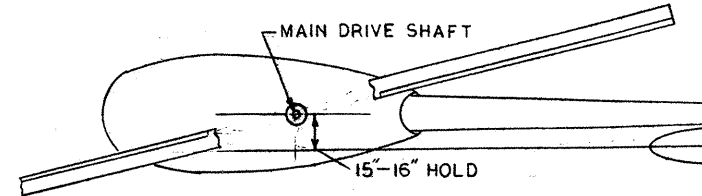
MAINTAIN ALL "A" LINES PARALLEL

FILL BACK SIDE END WITH FIBER GLASS

SEE PRINT E9-2000 FOR PROPER POSITIONING OF THESE 3/16 BOLTS

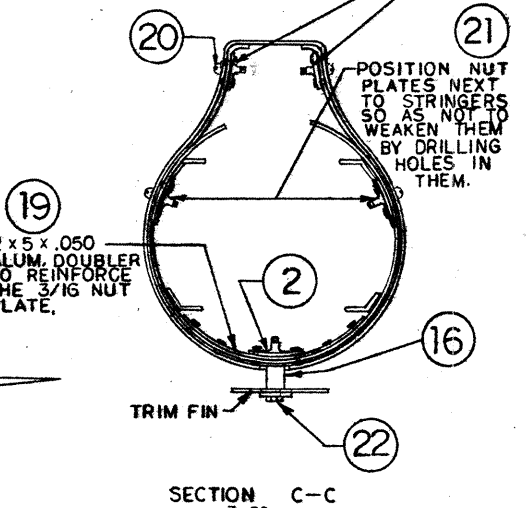
MAINTAIN A 7/8 ± 1/16 SPACE BETWEEN BKT PIN E 9-3252 AND VERTICAL FIN

BOLT IN PLACE THEN CUT SPACER TO PROPER LENGTH TO ACHIEVE A 2° POSITIVE ANGLE. SEE ADJUSTMENT DRAWING BELOW.



TO ADJUST FOR A 2° TRIM FIN ANGLE, ESTABLISH A LINE OF SIGHT REFERENCE ON THE MEAN CHORD LINE AT THE TOP OF THE VERTICAL TRIM FIN AND OBSERVE 15-16" AT MAIN DRIVE SHAFT. FLIGHT TEST MUST BE CONDUCTED TO CONFIRM THE CORRECTNESS OF THE 2° POSITIVE ANGLE.

ATTACH 8-32 NUT PLATES TO SLIDER COVER WHICH IS TO BE SLIPPED UNDER THE TAIL CONE COVER AS SHOWN.



SECTION C-C Z-D3

ROTORWAY INTERNATIONAL PHOENIX, ARIZONA

SCALE: NONE APPROVED BY: *[Signature]* DRAWN BY: R.M.M. DATE: 2-1-91 REVISED 8-26-91

VERTICAL & HORIZONTAL TRIM FIN

DRAWING NUMBER E9-2001-1